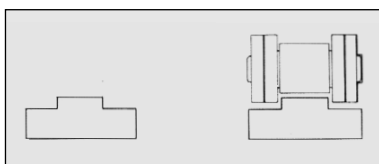
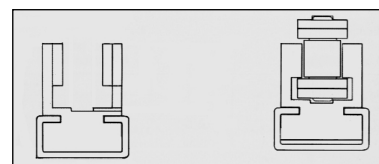


INFORMATION
INFORMATION

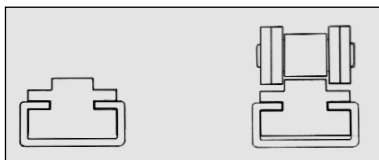
T-profil, sida 2
T-profile, page 2



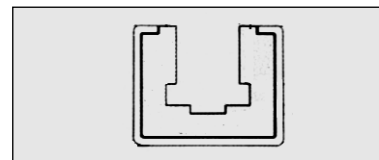
CK-profil, sida 5
CK-profile, page 5



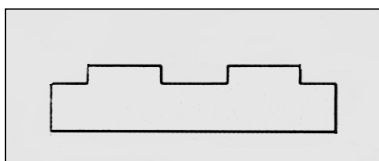
CT-profil, sida 2
CT-profile, page 2



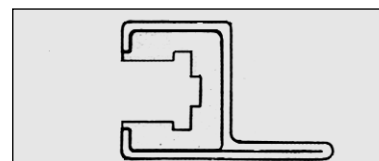
CGK-profil, sida 6
CGK-profile, page 6



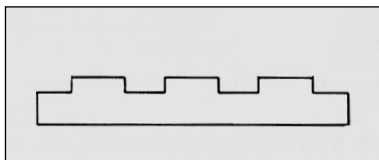
T-profil duplex, sida 3
T-profile duplex, page 3



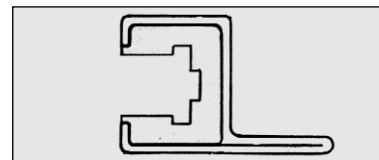
CGK-profil B, sida 6
CGK-profile B, page 6



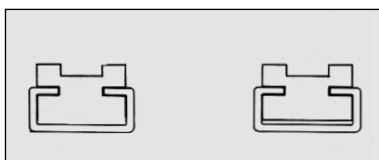
T-profil triplex, sida 3
T-profile triplex, page 3



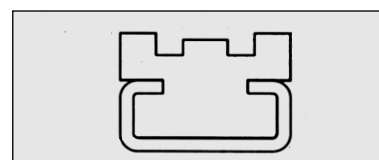
CGK-profil C, sida 6
CGK-profile C, page 6



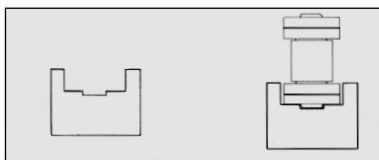
CTD-profil, sida 3
CTD-profile, page 3



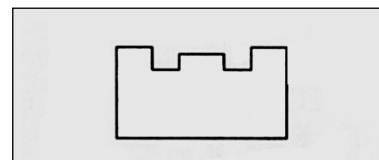
TGC-profil, sida 7
TGC-profile, page 7



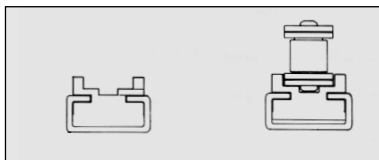
U-profil, sida 4
U-profile, page 4



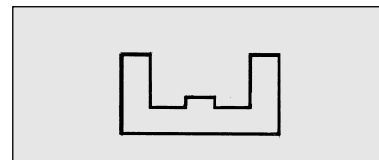
NTG-profil, sida 7
NTG-profile, page 7



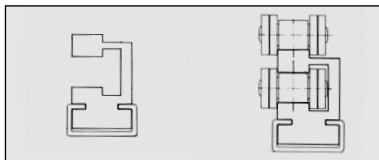
CU-profil, sida 4
CU-profile, page 4



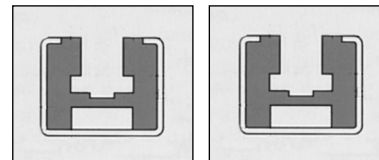
TG-profil, sida 7
TG-profile, page 7



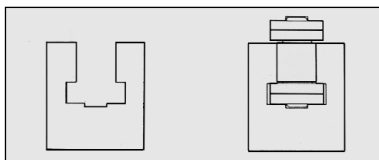
ETC-profil, sida 4
ETC-profile, page 4



GK-profil, sida 7
GK-profile, page 7



K-profil, sida 5
K-profile, page 5



CF-profil, sida 8
CF-profile, page 8

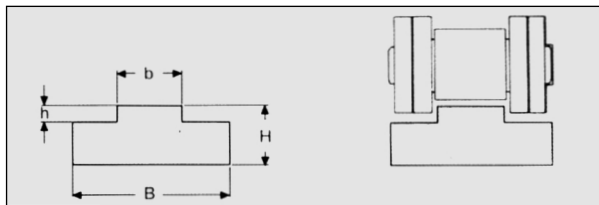


GLIDLISTER FÖR KEDJA

CHAIN GUIDES

T-profil för simplex kedja enl. DIN 8187
Material: PE55 • Färg: Grön • Längd: 2m

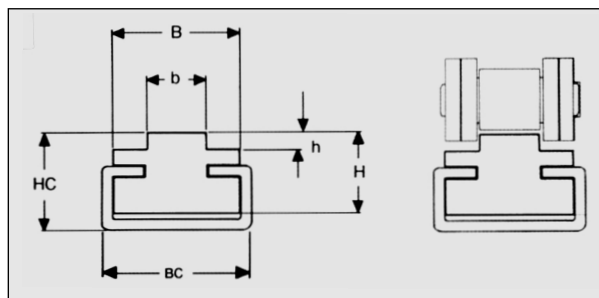
T-profile for simplex roller chain acc. to Din 8187
Material PE55 • Colour: Green • Length 2m



Best. Nr. Code	ISO Nr./No.	Kedjetyp Chain size	Mått i mm. / Dimension in mm.				Vikt / Weight kg/m
			B	H	b	h	
T 10110	—	3/8 x 5/32"	15	10	3.8	1.5	0.125
T 10210	06 B-1	3/8 x 7/32"	15	10	5.5	1.5	0.130
T 10310	083-1	1/2 x 3/16"	15	10	4.7	1.6	0.130
T 10410	085-1	1/2 x 1/4"	20	10	6.2	2.1	0.160
T 10510	08 B-1	1/2 x 5/16"	20	10	7.5	2.2	0.165
T 10515	08 B-1	1/2 x 5/16"	20	15	7.5	2.2	0.260
T 10520	08 B-1	1/2 x 5/16"	20	20	7.5	2.2	0.350
T 10530	08 B-1	1/2 x 5/16"	20	30	7.5	2.2	0.540
T 10610	—	5/8 x 1/4"	20	10	6.3	2.6	0.155
T 10710	10 B-1	5/8 x 3/8"	20	10	9.3	2.6	0.160
T 10715	10 B-1	5/8 x 3/8"	20	15	9.3	2.6	0.260
T 10720	10 B-1	5/8 x 3/8"	20	20	9.3	2.6	0.350
T 10730	10 B-1	5/8 x 3/8"	20	30	9.3	2.6	0.540
T 10810	12 B-1	3/4 x 7/16"	25	10	11.3	2.4	0.210
T 10815	12 B-1	3/4 x 7/16"	25	15	11.3	2.4	0.325
T 10820	12 B-1	3/4 x 7/16"	25	20	11.3	2.4	0.440
T 10830	12 B-1	3/4 x 7/16"	25	30	11.3	2.4	0.680
T 10915	16 B-1	1" x 17 mm	40	15	16.5	3.5	0.470
T 10920	16 B-1	1" x 17 mm	40	20	16.5	3.5	0.660
T 10930	16 B-1	1" x 17 mm	40	30	16.5	3.5	1.040
T 11015	20 B-1	1 1/4" x 3/4"	45	15	19.0	4.2	0.530
T 11115	24 B-1	1 1/2" x 1"	60	15	24.7	5.5	0.665
T 11220	28 B-1	1 3/4" x 31 mm	75	20	30.1	6.8	1.130
T 11320	32 B-1	2" x 31 mm	80	20	30.1	7.7	1.150

CT-profil med zinkat eller rostfritt C-stål för
simplex kedja enl. DIN 8187
Material: PE55 • Färg: Grön
Längd: Plast 2m, C-stål 6m

CT-profile with galvanized or stainless steel
C-channel for simplex roller chain acc. to Din 8187
Material: PE55 • Colour: Green
Length: Chain guide 2m, C-Channel 6m



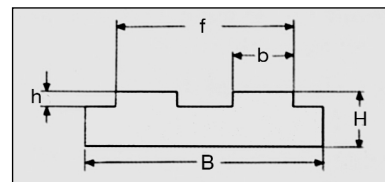
Best. Nr. / Code			ISO Nr./No.	Kedjetyp Chain size	Mått i mm. / Dimension i mm.						Vikt / Weight kg/m
Plast Plastic	C-Stål Zinkad C-Channel Galvanized	C-Stål Rostfritt C-Channel Stainless			BC	B	b	HC	H	h	
CT 04	C 01VZ	C 01VA	08 B-1	1/2 x 5/16"	24	20.0	7.5	11	9	2.2	0.120
CT 02	C 02VZ	C 02VA	085-1	1/2 x 1/4"	20	20.0	6.2	17	15	2.1	0.122
CT 04	C 02VZ	C 02VA	083-1	1/2 x 3/16"	20	17.0	4.7	17	15	1.6	0.126
CT 05	C 02VZ	C 02VA	085-1	1/2 x 1/4"	20	17.0	6.2	17	15	2.1	0.126
CT 06	C 02VZ	C 02VA	08 B-1	1/2 x 5/16"	20	17.0	7.5	17	15	2.2	0.130
CT 07	C 02VZ	C 02VA		5/8 x 1/4"	20	17.0	6.3	17	15	2.6	0.121
CT 08	C 02VZ	C 02VA	10 B-1	5/8 x 3/8"	20	17.0	9.3	17	15	2.6	0.135
CT 09	C 02VZ	C 02VA	12 B-1	3/4 x 7/16"	20	20.0	11.3	17	15	2.4	0.175
CT 10	C 03VZ	C 03VA	12 B-1	3/4 x 7/16"	28	23.5	11.3	18	15	2.4	0.289
CT 11	C 03VZ	C 03VA	16 B-1	1" x 17 mm	28	23.5	16.5	18	15	3.5	0.297
CT 12	C 03VZ	C 03VA	20 B-1	1 1/4 x 3/4"	28	28.0	19.0	18	15	4.3	0.345
CT 13	C 05VZ	C 05VA	24 B-1	1 1/2" x 1"	38	33.0	24.7	30	25	5.5	0.635
CT 14	C 05VZ	C 05VA	28 B-1	1 3/4 x 31 mm	38	38.0	30.1	30	25	6.8	0.731
CT 15	C 05VZ	C 05VA	32 B-1	2" x 31 mm	38	38.0	30.1	30	25	7.7	0.710
CT 16	C 10VZ	C 010VA	32 B-1	2" x 31 mm	60	60.0	30.1	35	25	7.7	1.240

GLIDLISTER FÖR KEDJA

CHAIN GUIDES

T-profil för duplex kedja enl. DIN 8187
Material: PE55 • Färg: Grön • Längd: 2m

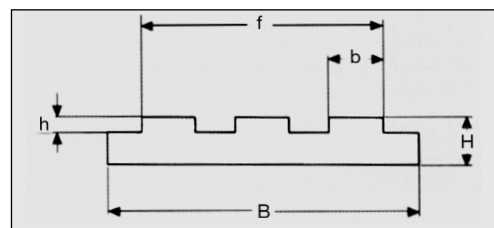
T-profile for Duplex roller chain acc. to Din 8187
Material PE55 • Colour: Green • Length 2m



Best. Nr. Code	ISO Nr. / No.	Kedjetyp Chain size	Mått i mm / Dimensions in mm.					Vikt / Weight kg/m
			B	H	b	h	f	
T 201	06 B-2	3/8 x 7/32"	25.0	10	5.5	1.5	15.7	0.250
T 202	08 B-2	1/2 x 5/16"	35.0	10	7.5	2.2	21.4	0.360
T 203	08 B-2	1/2 x 5/16"	35.0	15	7.5	2.2	21.4	0.530
T 204	08 B-2	1/2 x 5/16"	35.0	20	7.5	2.2	21.4	0.690
T 205	08 B-2	1/2 x 5/16"	35.0	30	7.5	2.2	21.4	1.005
T 206	10 B-2	5/8 x 3/8"	40.0	10	9.3	2.6	25.9	0.425
T 207	12 B-2	3/4 x 7/16"	45.0	10	11.3	2.4	30.8	0.480
T 208	16 B-2	1" x 17 mm	48.5	15	16.5	3.5	48.4	0.820
T 209	20 B-2	1 1/4 x 3/4"	55.5	15	19.0	4.2	55.5	0.930
T 210	24 B-2	1 1/2 x 1"	73.1	20	24.7	5.5	73.1	1.620
T 211	28 B-2	1 3/4" x 31 mm	89.7	25	30.1	6.8	89.7	2.490
T 212	32 B-2	2" x 31 mm	88.7	30	30.1	7.7	88.7	2.930

T-profil för triplex kedja enl. DIN 8187
Material: PE55 • Färg: Grön • Längd: 2m

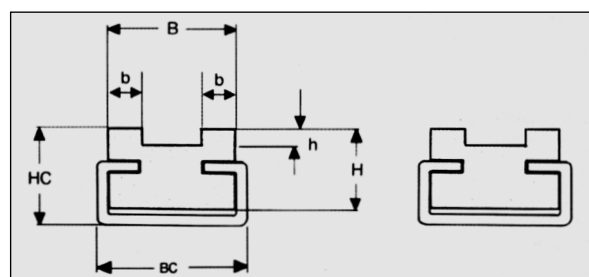
T-profile for Triplex roller chain acc. to Din 8187
Material PE55 • Colour: Green • Length 2m



Best. Nr. Code	ISO Nr. / No.	Kedjetyp Chain size	Mått i mm / Dimensions in mm.					Vikt / Weight kg/m
			B	H	b	h	f	
T 301	06 B-3	3/8 x 7/32"	35.0	10	5.5	1.5	25.9	0.306
T 302	08 B-3	1/2 x 5/16"	45.0	10	7.5	2.2	35.3	0.381
T 303	08 B-3	1/2 x 5/16"	45.0	15	7.5	2.2	35.3	0.595
T 304	08 B-3	1/2 x 5/16"	45.0	20	7.5	2.2	35.3	0.808
T 305	08 B-3	1/2 x 5/16"	45.0	30	7.5	2.2	35.3	0.235
T 306	10 B-3	5/8 x 3/8"	55.0	10	9.3	2.6	42.5	0.455
T 307	12 B-3	3/4 x 7/16"	65.0	10	11.3	2.4	50.3	0.546
T 308	16 B-3	1" x 17 mm	95.0	15	16.5	4.3	80.3	1.167
T 309	20 B-3	1 1/4 x 3/4"	105.0	15	19.0	4.2	92.0	1.304
T 310	24 B-3	1 1/2 x 1"	135.0	20	24.7	5.5	121.5	2.247
T 311	28 B-3	1 3/4" x 31 mm	170.0	25	30.1	6.8	149.3	3.522
T 312	32 B-3	2" x 31 mm	170.0	30	30.1	7.7	149.3	4.262

CTD-profil med zinkat eller rostfritt C-stål för duplex.
Kedja enl. DIN 8187 • Material: PE55
Färg: Grön • Längd: Plast 2m, C-stål 6m.

CTD-profile with galvanized or stainless steel C-Channel for
Duplex roller chain acc. to Din 8187
Material PE55 • Colour: Green
Length: Chain guide 2m, C-Channel 6m



Best. Nr. / Code			ISO Nr. / No.	Kedjetyp Chain size	Mått i mm. / Dimensions in mm.						Vikt / Weight kg/m
Plast Plastic	C-Stål Zinkad C-Channel Galvanized	C-Stål Rostfritt C-Channel Stainless			BC	B	b	HC	H	h	
CTD 01	C 02VZ	C 02VA	08 B-2	1/2 x 5/16"	20	21.4	7.5	17	15	2.2	0.240
CTD 02	C 02VZ	C 02VA	10 B-2	5/8 x 3/8"	20	25.7	9.3	17	15	2.6	0.260
CTD 03	C 03VZ	C 03VA	12 B-2	3/4 x 7/16"	28	30.7	11.3	20	15	2.4	0.330
CTD 04	C 05VZ	C 05VA	16 B-2	1" x 17mm	38	48.0	16.5	27	20	3.5	0.650
CTD 05	C 05VZ	C 05VA	20 B-2	1 1/4 x 3/4"	38	55.0	19.0	30	25	4.3	0.925
CTD 06	C 05VZ	C 05VA	24 B-2	1 1/2 x 1"	38	72.0	24.7	35	30	5.5	1.425

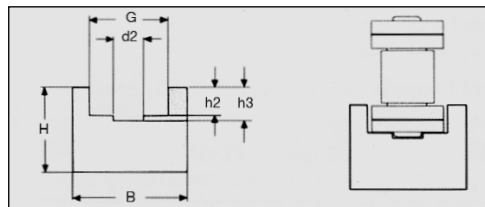
Reservation för måttförändringar / Reservation for dimensional changes
Mått i mm / Dimensions in mm

GLIDLISTER FÖR KEDJA

CHAIN GUIDES

U-profil för simplex kedja enl. DIN 8187
Material: PE55 • Färg: Grön • Längd: 2m

U-profile for simplex roller chain acc. to Din 8187
Material PE55 • Colour: Green • Length 2m

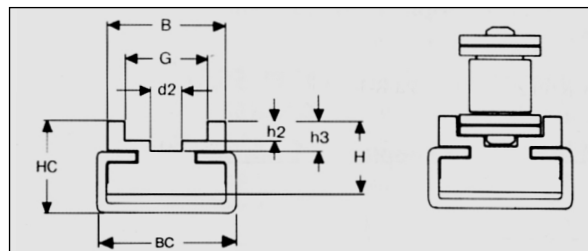


Best. Nr. Code	ISO Nr. / No.	Kedjetyp Chain size	Mått i mm / Dimensions in mm.						Vikt/Weight kg/m
			B	H	h 2	h 3	d 2	G	
U 101	—	3/8 x 5/32"	20	15	2.7	4.0	3.7	9.2	0.257
U 102	06 B-1	3/8 x 7/32"	20	15	2.8	4.2	3.7	9.2	0.257
U 103	083-1	1/2 x 3/16"	20	15	2.3	3.4	4.0	10.7	0.259
U 104	085-1	1/2 x 1/4"	20	15	3.2	4.7	4.4	11.7	0.243
U 105	085-1	1/2 x 1/4"	25	15	3.5	4.8	4.9	12.7	0.308
U 106	08 B-1	1/2 x 5/16"	25	15	3.5	4.8	4.9	12.7	0.308
U 107	—	5/8 x 1/4"	25	15	3.6	5.2	5.5	15.2	0.296
U 108	10 B-1	5/8 x 3/8"	25	15	3.6	5.1	5.5	15.2	0.296
U 109	12 B-1	3/4 x 7/16"	25	20	3.9	5.7	6.2	16.7	0.403
U 110	16 B-1	1" x 17 mm	35	25	8.4	9.9	8.9	24.4	0.624

CU-profil med zinkat eller rostfritt C-stål för
simplex kedja enl. DIN 8187
Material: PE55 • Färg: Grön • Längd: Plast 2m, C-stål 6m

CU-profile with galvanized or stainless steel C-Channel
for roller chain acc. to Din 8187

Material: PE55 • Colour: Green
Length: Chain guide 2m, C-Channel 6m

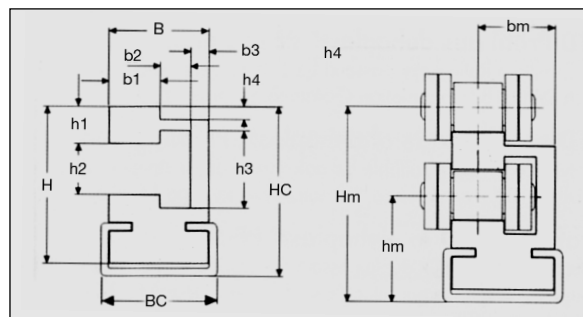


Best. Nr. / Code	Plast Plastic	C-Stål Zinkad C-Channel Galvanized	C-Stål Rostfritt C-Channel Stainless	ISO Nr. / No.	Kedjetyp Chain size	Mått i mm / Dimensions in mm.								Vikt / Weight kg/m
						BC	B	H	HC	h 2	h 3	d 2	G	
CU 01	C 01VZ	C 01VA	C 01VA	08 B-1	1/2 x 5/16"	24	20.0	9	11	3.5	4.8	4.9	12.7	0.145
CU 02	C 03VZ	C 03VA	C 03VA	10 B-1	5/8 x 3/8"	28	23.0	12	18	3.6	5.1	5.5	15.2	0.200
CU 03	C 03VZ	C 03VA	C 03VA	12 B-1	3/4 x 7 /16"	28	23.0	12	18	3.9	5.7	6.2	16.7	0.200
CU 04	C 08VZ	C 08VA	C 08VA	16 B-1	1" x 17 mm	38	32.5	20	30	8.4	9.9	8.9	24.4	0.770
CU 05	C 10VZ	C 10VA	C 10VA	20 B-1	1 1/4 x 3/4"	60	60.0	25	35	10.0	11.9	11.0	28.0	1.040
CU 06	C 10VZ	C 10VA	C 10VA	24 B-1	1 1/2" x 1"	60	60.0	30	40	13.0	14.9	16.0	35.0	1.340
CU 07	C 10VZ	C 10VA	C 10VA	28 B-1	1 3/4" x 31 mm	60	65.0	40	45	16.0	18.0	17.0	39.0	1.840
CU 12	C 10VZ	C 10VA	C 10VA	32 B-1	2" x 31 mm	60	70.0	40	45	16.0	21.7	19.0	44.0	2.040

ETC-profil med zinkat eller rostfritt C-stål för
simplex kedja enl. DIN 8187
Material: PE55 • Färg: Grön
Längd: Plast 2m, C-stål 6m

ETC-profile with galvanized or stainless steel C-Channel
for roller chain acc. to Din 8187

Material: PE55 • Colour: Green
Length: Chain guide 2m, C-Channel 6m



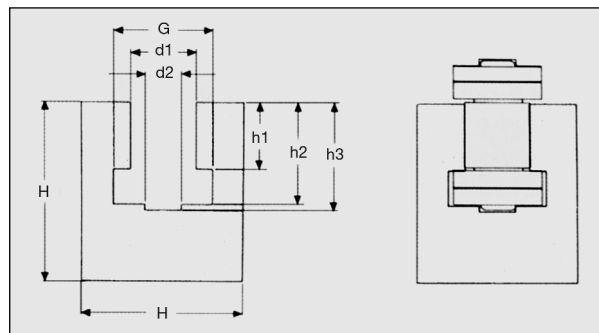
Best. Nr. / Code	Plast Plastic	C-Stål Zinkad C-Channel Galvanized	C-Stål Rostfritt C-Channel Stainless	ISO Nr. / No.	Kedjetyp Chain size	Mått i mm. / Dimensions in mm.											Vikt / Weight kg/m			
						BC	B	H	HC	h 1	h 2	h 3	h 4	b 1	b 2	b 3		Hm	hm	bm
ETC 01	C 02VZ	C 02VA	C 02VA	06 B-1	3/8 x 7/32"	20	20.0	24	27	6.6	6.6	9.3	1.5	5.2	4.3	10.4	30.2	17	14.5	0.470
ETC 02	C 02VZ	C 02VA	C 02VA	08 B-1	1/2 x 5/16"	20	20.0	27	30	7.1	8.7	12.8	2.2	7.6	5.1	7.6	33.8	18	16.5	0.530
ETC 03	C 02VZ	C 02VA	C 02VA	10 B-1	5/8 x 3/8"	20	20.0	33	36	9.7	10.4	15.4	2.6	9.3	5.3	5.5	41.1	21	15.5	0.690
ETC 04	C 03VZ	C 03VA	C 03VA	12 B-1	3/4 x 7/16"	28	24.3	37	41	10.2	12.3	16.9	2.4	11.5	6.0	6.8	46.5	24	18.5	0.750
ETC 05	C 03VZ	C 03VA	C 03VA	16 B-1	1" x 17 mm	28	33.5	50	54	11.9	16.1	24.4	4.3	16.9	10.0	6.6	62.0	34	25.0	2.150

GLIDLISTER FÖR KEDJA

CHAIN GUIDES

K-profil för simplex kedja enl. DIN 8187
Helt utförande, 2-delat på förfrågan
Material: PE55 • Färg: Grön • Längd: 2m

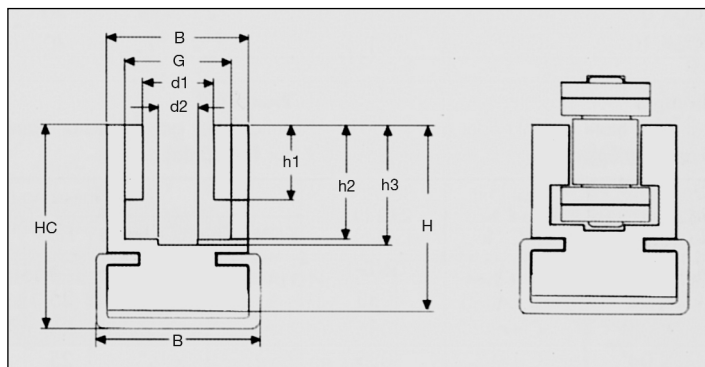
K-profile for simplex roller chain acc. to Din 8187
One piece type, two piece type on request
Material: PE55 • Colour: Green • Length: 2m



Best. Nr. Code	ISO Nr. / No.	Kedjetyp Chain size	Mått i mm. / Dimensions in mm.									Vikt / Weight kg/m
			B	H	h 1	h 2	h 3	d 2	d 1	G		
K 101	—	3/8 x 5/32"	20	25	3.8	5.8	8.0	4.0	6.6	9.3	0.441	
K 102	06 B-1	3/8 x 7/32"	20	25	5.6	8.7	9.9	4.0	6.6	9.3	0.414	
K 103	083-1	1/2 x 3/16"	20	25	4.7	7.4	8.3	4.0	8.0	10.8	0.405	
K 104	085-1	1/2 x 1/4"	24	30	6.3	9.8	11.2	5.0	8.0	11.8	0.586	
K 105	085-1	1/2 x 1/4"	24	30	6.3	10.2	11.3	5.0	8.7	12.8	0.575	
K 106	08 B-1	1/2 x 5/16"	24	30	7.6	11.5	12.7	5.0	8.7	12.8	0.564	
K 107	—	5/8 x 1/4"	30	30	6.3	10.3	11.7	6.0	10.4	15.4	0.720	
K 108	10 B-1	5/8 x 3/8"	30	35	9.3	13.5	14.8	6.0	10.4	15.4	0.832	
K 109	12 B-1	3/4 x 7/16"	40	35	11.5	15.9	17.5	7.9	12.3	16.9	1.106	
K 110	16 B-1	1" x 17 mm	40	45	16.5	25.7	26.8	9.0	16.1	24.4	1.231	
K 111	20 B-1	1 1/4 x 3/4"	50	50	19.0	29.3	31.2	11.0	19.3	27.5	1.726	
K 112	24 B-1	1 1/2 x 1"	60	60	25.2	38.2	40.1	16.0	25.7	36.5	2.332	
K 113	28 B-1	1 3/4 x 31 mm	60	70	30.8	46.9	48.9	17.0	28.3	41.5	2.473	
K 114	32 B-1	2" x 31 mm	70	75	30.8	47.3	53.0	19.0	29.6	44.5	3.264	

CK-profil med zinkat eller rostfritt C-stål för simplex kedja enl. DIN 8187
Helt utförande • Material: PE55
Färg: Grön • Längd: Plast 2m, C-stål 6m

CK-profile with galvanized or stainless steel C-channel for roller chain acc. to Din 8187.
One piece type • Material: PE55 • Colour Green
Length: Chain guide 2m, C-channel 6m



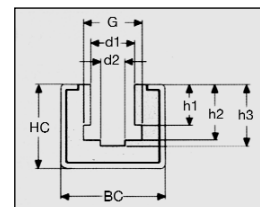
Best. Nr. / Code			ISO Nr. / No.	Kedjetyp Chain size	Mått i mm. / Dimensions in mm.										Vikt/Weight kg/m
Plast Plastic	C-Stål Zinkad C-Channel Galvanized	C-Stål Rostfritt C-Channel Stainless			BC	B	H	HC	h 1	h 2	h 3	d 2	d 1	G	
CK 01	C 02VZ	C 02VA	—	3/8 x 5/32"	20	20	17.5	21	3.8	5.8	8.0	4.0	6.6	9.3	0.248
CK 02	C 02VZ	C 02VA	06 B-1	3/8 x 7/32"	20	20	17.5	21	5.6	8.7	9.9	4.0	6.6	9.3	0.192
CK 03	C 02VZ	C 02VA	083-1	1/2 x 3/16"	20	20	17.5	21	4.7	7.4	8.3	4.0	8.0	10.8	0.192
CK 04	C 03VZ	C 03VA	085-1	1/2 x 1/4"	28	24	27.5	32	6.3	9.8	11.2	5.0	8.0	11.8	0.522
CK 05	C 03VZ	C 03VA	085-1	1/2 x 1/4"	28	24	27.5	32	6.3	10.2	11.3	5.0	8.7	12.8	0.522
CK 06	C 03VZ	C 03VA	08 B-1	1/2 x 5/16"	28	24	27.5	32	7.6	11.5	12.7	5.0	8.7	12.8	0.502
CK 07	C 03VZ	C 03VA	—	5/8 x 1/4"	28	24	27.5	32	6.3	10.3	11.7	6.0	10.4	15.4	0.483
CK 08	C 03VZ	C 03VA	10 B-1	5/8 x 3/8"	28	24	27.5	32	9.3	13.5	14.8	6.0	10.4	15.4	0.452
CK 09	C 05VZ	C 05VA	12 B-1	3/4 x 7/16"	38	38	34.0	43	11.5	15.9	17.5	7.9	12.3	16.9	0.729
CK 10	C 05VZ	C 05VA	16 B-1	1" x 17 mm	38	38	40.0	50	16.5	25.7	26.8	9.0	16.1	24.4	0.620
CK 11	C 10VZ	C 10VA	20 B-1	1 1/4 x 3/4"	60	60	45.0	55	19.0	29.3	31.2	11.0	19.3	27.5	2.640
CK 12	C 10VZ	C 10VA	24 B-1	1 1/2 x 1"	60	60	55.0	65	25.2	38.2	40.1	16.0	25.7	36.5	2.840
CK 13	C 10VZ	C 10VA	28 B-1	1 3/4" x 31 mm	60	70	70.0	80	30.8	46.9	48.9	17.0	28.3	41.5	4.040
CK 14	C 10VZ	C 10VA	32 B-1	2" x 31 mm	60	70	70.0	80	30.8	47.3	53.0	19.0	29.6	44.5	4.040

GLIDLISTER FÖR KEDJA

CHAIN GUIDES

CGK-profil med zinkat eller rostfritt C-stål för simplex kedja enl. DIN 8187
Helt utförande • Material: PE55 • Färg: Grön • Längd: Plast 2m, C-stål 6m.

CGK-profile with galvanized or stainless steel C-channel for roller chain acc. to Din 8187
One piece type • Material: PE55 • Colour: Green Length: Chain guide 2m, C-channel 6m



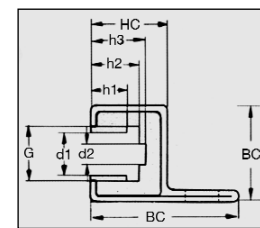
Utförande A / Version A

Best. Nr. / Code			ISO Nr. / No.	Kedjetyp Chain size	Mått i mm. / Dimensions in mm.									Vikt / Weight kg/m
Plast Plastic	C-Stål Zinkad C-Channel Galvanized	C-Stål Rostfritt C-Channel Stainless			HC	BC	h 1	h 2	h 3	d 2	d 1	G		
CGK 01	C 06VZ	C 06VA	06 B-1	3/8 x 7/32"	24	30	5.6	8.7	9.9	4.0	6.6	9.3	0.340	
CGK 02	C 06VZ	C 06VA	083-1	1/2 x 3/16"	24	30	4.7	7.4	8.3	4.0	8.0	10.8	0.340	
CGK 03	C 06VZ	C 06VA	085-1	1/2 x 1/4"	24	30	6.3	9.8	11.2	5.0	8.0	11.8	0.340	
CGK 04	C 06VZ	C 06VA	085-1	1/2 x 1/4"	24	30	6.3	10.2	11.3	5.0	8.7	12.8	0.340	
CGK 05	C 06VZ	C 06VA	08 B-1	1/2 x 5/16"	24	30	7.6	11.5	12.7	5.0	8.7	12.8	0.340	
CGK 06	C 06VZ	C 06VA	—	5/8 x 1/4"	24	30	6.3	10.3	11.7	6.0	10.4	15.4	0.340	
CGK 07	C 06VZ	C 06VA	10 B-1	5/8 x 3/8"	24	30	9.3	13.5	14.8	6.0	10.4	15.4	0.340	
CGK 08	C 06VZ	C 06VA	12 B-1	3/4 x 7/16"	24	30	11.5	15.9	17.5	7.9	12.3	16.9	0.340	
CGK 09	C 09VZ	C 09VA	16 B-1	1" x 17 mm	40	45	16.5	25.7	26.8	9.0	16.1	24.4	1.150	
CGK 10	C 09VZ	C 09VA	20 B-1	1 1/4 x 3/4"	40	45	19.0	29.3	31.2	11.0	19.3	27.5	1.050	

Utförande B / Version B

För horisontalt montage • För mått på fästhål, se sidan 8.

For Horizontal fixing • Measure on fixing holes on page 8.

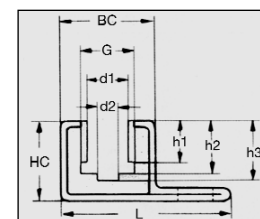


Best. Nr. / Code			ISO Nr. / No.	Kedjetyp Chain size	Mått i mm. / Dimensions in mm.									Vikt / Weight kg/m
Plast Plastic	C-Stål Zinkad C-Channel Galvanized	C-Stål Rostfritt C-Channel Stainless			HC	BC	L	h 1	h 2	h 3	d 2	d 1	G	
CGK 01	C 14VZ	C 14VA	06 B-1	3/8 x 7/32"	25	31	47	5.6	8.7	9.9	4.0	6.6	9.3	0.96
CGK 02	C 14VZ	C 14VA	083-1	1/2 x 3/16"	25	31	47	4.7	7.4	8.3	4.0	8.0	10.8	0.95
CGK 03	C 14VZ	C 14VA	085-1	1/2 x 1/4"	25	31	47	6.3	9.8	11.2	5.0	8.0	11.8	0.95
CGK 04	C 14VZ	C 14VA	085-1	1/2 x 1/4"	25	31	47	6.3	10.2	11.3	5.0	8.7	12.8	0.95
CGK 05	C 14VZ	C 14VA	08 B-1	1/2 x 5/16"	25	31	47	7.6	11.5	12.7	5.0	8.7	12.8	0.95
CGK 06	C 14VZ	C 14VA	—	5/8 x 1/4"	25	31	47	6.3	10.3	11.7	6.0	10.4	15.4	0.90
CGK 07	C 14VZ	C 14VA	10 B-1	5/8 x 3/8"	25	31	47	9.3	13.5	14.8	6.0	10.4	15.4	0.90
CGK 08	C 14VZ	C 14VA	12 B-1	3/4 x 7/16"	25	31	47	11.5	15.9	17.5	7.9	12.3	16.9	0.84

Utförande C / Version C

För vertikalt montage • För mått på fästhål, se sidan 8.

For vertical fixing • Measure on fixing holes on page 8.



Best. Nr. / Code			ISO Nr. / No.	Kedjetyp Chain size	Mått i mm. / Dimensions in mm.									Vikt / Weight kg/m
Plast Plastic	C-Stål Zinkad C-Channel Galvanized	C-Stål Rostfritt C-Channel Stainless			HC	BC	L	h 1	h 2	h 3	d 2	d 1	G	
CGK 01	C 15VZ	C 15VA	06 B-1	3/8 x 7/32"	25	31	53	5.6	8.7	9.9	4	6.6	9.3	1.14
CGK 02	C 15VZ	C 15VA	083	1/2 x 3/16"	25	31	53	4.7	7.4	8.3	4	8.0	10.8	1.10
CGK 03	C 15VZ	C 15VA	085	1/2 x 1/4"	25	31	53	6.3	9.8	11.2	5	8.0	11.8	1.10
CGK 04	C 15VZ	C 15VA	085	1/2 x 1/4"	25	31	53	6.3	10.2	11.3	5	8.7	12.8	1.10
CGK 05	C 15VZ	C 15VA	08 B-1	1/2 x 5/16"	25	31	53	7.6	11.5	12.7	5	8.7	12.8	1.10
CGK 06	C 15VZ	C 15VA	—	5/8 x 1/4"	25	31	53	6.3	10.3	11.7	6	10.4	15.4	1.05
CGK 07	C 15VZ	C 15VA	10 B-1	5/8 x 3/8"	25	31	53	9.3	13.5	14.8	6	10.4	15.4	1.05
CGK 08	C 15VZ	C 15VA	12 B-1	3/4 x 7/16"	25	31	53	11.5	15.9	17.5	7.9	12.3	16.9	1.05

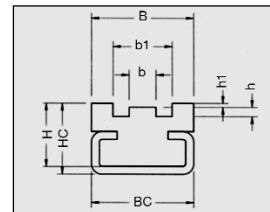
GLIDLISTER FÖR KEDJA

CHAIN GUIDES

TGC-profil med förzinkat C-stål för simplex kedja enl. DIN 8187
Material: PE55 • Färg: Grön • Längd: Plast 2m, C-stål 6m.

TGC-profile with galvanized or stainless steel C-channel
for roller chain acc. to Din 8187

Material: PE55 • Colour: Green • Lenght: Chain guide 2m, C-channel 6m

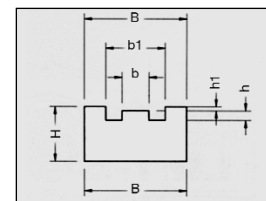


Best. Nr. / Code			ISO Nr. / No.	Kedjetyp Chain size	Mått i mm. / Dimensions in mm.								Vikt / Weight kg/m
Plast Plastic	C-Stål Zinkad C-Channel Galvanized	C-Stål Rostfritt C-Channel Stainless			B	BC	H	HC	b	b 1	h	h 1	
TGC01	C 02VZ	C 02VA	06 B-1	3/8 x 7/32"	20	20	14	17	3.8	13.0	1.5	1.1	0.772
TGC02	C 02VZ	C 02VA	083-1	1/2 x 3/16	20	20	14	17	3.0	12.4	1.6	1.4	0.772
TGC03	C 02VZ	C 02VA	085-1	1/2 x 1/4"	22	20	14	17	4.5	15.1	2.2	1.6	0.800
TGC04	C 02VZ	C 02VA	08B-1	1/2 x 5/16"	25	20	16	20	5.7	16.3	2.2	1.6	0.890
TGC05	C 02VZ	C 02VA	—	5/8 x 1/4"	25	20	16	20	4.1	16.1	2.6	2.1	0.890
TGC06	C 03VZ	C 03VA	10B-1	5/8 x 3/8"	28	28	16	20	7.4	19.2	2.6	2.1	1.307
TGC07	C 03VZ	C 03VA	12B-1	3/4 x 7/16"	30	28	18	22	9.2	21.8	2.4	2.8	1.367
TGC08	C 08VZ	C 08VA	16B-1	1" x 17 mm	42	38	25	30	15.0	33.8	3.5	3.3	2.417
TGC09	C 08VZ	C 08VA	20B-1	1 1/4 x 3/4"	50	38	30	35	16.8	40.0	4.2	4.0	2.840

NTG-profil för simplex kedja enl. DIN 8187
Material: PE55 • Färg: Grön • Längd: 2m

NTG-profile for simplex roller chain acc. to Din 8187

Material: PE55 • Colour: Green • Lenght: 2m

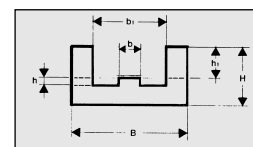


Best. Nr. Code	ISO Nr. / No.	Kedjetyp Chain size	Mått i mm. / Dimensions in mm.						Vikt / Weight kg/m
			B	H	b	b 1	h	h 1	
NTG 01	06 B-1	3/8 x 7/32"	20	10	3.8	13.0	1.5	1.1	0.188
NTG 02	083-1	1/2 x 3/16"	20	10	3.0	12.4	1.6	1.4	0.188
NTG 03	085-1	1/2 x 1/4"	22	10	4.5	15.1	2.2	1.6	0.207
NTG 04	08B-1	1/2 x 5/16"	25	15	5.7	16.3	2.2	1.6	0.352
NTG 05	—	5/8 x 1/4"	25	15	4.1	16.1	2.6	2.1	0.352
NTG 06	10B-1	5/8 x 3/8"	28	15	7.4	19.2	2.6	2.1	0.394
NTG 07	12B-1	3/4 x 7/16"	30	20	9.2	21.8	2.4	2.8	0.564
NTG 08	16B-1	1" x 17 mm	42	25	15.0	33.8	3.5	3.3	0.987
NTG 09	20B-1	1 1/4 x 3/4"	50	25	16.8	40.0	4.2	4.0	1.175

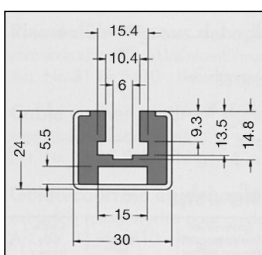
TG-profil för simplex kedja enl. DIN 8187 • Material: PE55 • Färg: Grön • Längd: 2m
OBS! Denna list kommer på sikt att utgå. Välj om möjligt NTG-profil.

TG-profile for simplex roller chain acc. to Din 8187 • Material: PE55 • Colour: Green • Lenght: 2m

Note: The production for this profile will cease use if possible NTG-profile



Best. Nr. Code	ISO Nr. / No.	Kedjetyp Chain size	Mått i mm. / Dimensions in mm.						Vikt / Weight kg/m
			B	H	b	b 1	h	h 1	
TG 1	06 B 1	3/8X7/32"	25	10	5.4	15	1.5	4.4	0.200
TG 2	08 B 1	1/2X5/16"	30	15	7.4	20	2.2	7.2	0.400
TG 3	10 B 1	5/8X3/8"	33	20	9.2	23	2.6	9.5	0.450
TG 4	12 B 1	3/4X7/16"	38	20	11.3	28	2.4	11.2	0.600
TG 5	16 B 1	1"X17 mm	51	25	16.5	41	3.5	16.5	1.000

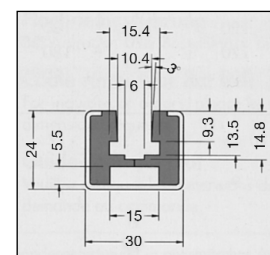


Plastdelen i helt utförande
Plastic in 1-piece type

GK-profil med förzinkat C-stål för simplex kedja ISO 10B-1
Plasten har fräst utrymme för bultskalle. C-stål är ej borrar. Material: plast PE1000
Längd: Plast 2m • C-stål kan även fås i rostfritt utförande, se sidan 8.

GK-profile with galvanized C-channel for roller chain ISO 10B-1
For fixing with hammer head screws. C-channel are not drilled. Material: PE1000
Lenght: Guide 2m. For C-channel in stainless steel se page 8.

Best. Nr. / Code	Färg / Colour	Längd / Lenght	Best. Nr. / Code	Färg / Colour	Längd / Lenght
GK 58 10	natur	6m	GK 59 10	natur	6m
GK 58 50	grön	6m	GK 59 50	grön	6m
GK 58 70	svart	6m	GK 59 70	svart	6m



Plastdelen i 2-delat utförande
Plastic in 2-piece type

GLIDLISTER FÖR FLAT, KIL OCH RUNDREMS PROFIL

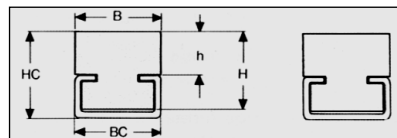
SLIDING RAILS FOR FLAT-, V-BELT OR ROUND-PROFILE

CF-profil med zinkat eller rostfritt C-stål.

Material: PE55 • Färg: Grön • Längd: Plast 2m, C-stål 6m

CF-profile with galvanized or stainless steel C-channel

Material: PE55 • Colour: Green • Length: Plastic 2m, C-channel 6m



Best. Nr. / Code			Mått i mm. / Dimensions in mm.					Vikt / Weight
Plast Plastic	C-Stål Zinkad C-Channel Galvanized	C-Stål Rostfritt C-Channel Stainless	BC	B	HC	H	h	kg/m
CF 02	C 01VZ	C 01VA	24	20	11	9	0.170	
CF 01	C 02VZ	C 01VA	20	20	11	6	0.090	
CF 02	C 02VZ	C 01VA	20	20	16	10	0.180	
CF 03	C 02VZ	C 01VA	20	20	14	10	0.180	
CF 04	C 02VZ	C 01VA	20	20	17	15	0.270	
CF 05	C 02VZ	C 01VA	20	20	20	18	0.366	
CF 06	C 03VZ	C 01VA	28	28	15	10	0.266	
CF 07	C 03VZ	C 01VA	28	28	18	15	0.399	
CF 08	C 05VZ	C 01VA	38	38	22	15	0.313	
CF 09	C 05VZ	C 01VA	38	38	25	20	0.632	
CF 10	C 10VZ	C 01VA	60	60	30	20	0.480	

Rundremsprofil enligt angiven diam. • Kilremsprofil enligt DIN 2215

Material: PE55 • Färg: svart • Längd: Plast 2m, C-stål 6m. • C-stål i zinkat eller rostfritt utförande.

Round profile acc. to dia., V-belt acc. to Din 2215 • Material: PE55 • Colour: Black • Length: Guide 2m, C-channel 6m

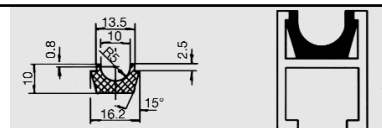
För rundrem diam. For round- profile dia.	Best. Nr. / Code			Mått i mm. / Dimensions in mm.							Vikt Weight kg/m	Måttskisser Sketch scale
	Plast Plastic	C-Stål Zinkad C-Channel Galvanized	C-Stål Rostfritt C-Channel Stainless	BC	B	H	HC	b	r	h		
8.0	KR 008				20	10	-	6.0	-	3.5	0.170	
10.0	KR 010				20	10	-	7.2	-	4.5	0.170	
13.0	KR 013				20	12	-	9.2	-	6.0	0.170	
17.0	KR 017				30	15	-	11.5	-	8.0	0.334	
20.0	KR 020				30	20	-	13.5	-	9.0	0.435	
22.0	KR 022				35	20	-	14.5	-	10.5	0.500	
25.0	KR 025				40	25	-	16.5	-	12.0	0.750	
32.0	KR 032				50	30	-	21.0	-	16.0	1.041	
40.0	KR 040				60	35	-	26.0	-	21.0	1.395	
8.0	KRC 08	C 02VZ	C 02VA	20	20	10	15	6.0	-	3.5	0.140	
10.0	KRC 10	C 02VZ	C 02VA	20	20	15	18	7.2	-	4.5	0.140	
13.0	KRC 13	C 03VZ	C 03VA	28	25	18	22	9.2	-	6.0	0.341	
17.0	RRC 17	C 03VZ	C 03VA	28	30	18	24	11.5	-	9.0	0.341	
20.0	KRC 20	C 03VZ	C 03VA	28	30	18	24	13.5	-	9.0	0.341	
22.0	KRC 22	C 05VZ	C 05VA	38	35	25	30	14.5	-	10.5	0.570	
25.0	KRC 25	C 05VZ	C 05VA	38	40	25	32	16.5	-	12.0	0.560	
32.0	KRC 32	C 10VZ	C 10VA	60	60	35	40	21.0	-	16.0	1.495	
40.0	KRC 40	C 10VZ	C 10VA	60	60	35	40	26.0	-	21.0	1.200	
5.0	RR 05				20	10	-	-	3	3.0	0.185	
6.3	RR 06				20	10	-	-	4	4.0	0.185	
8.0	RR 08				20	12	-	-	5	5.0	0.200	
9.5	RR 10				25	15	-	-	6	6.0	0.301	
12.5	RR 12				30	20	-	-	7	8.0	0.485	
15.0	RR 15				35	25	-	-	9	10.0	0.700	
18.0	RR 18				40	25	-	-	10	12.0	0.785	
5.0	RRC 05	C 02VZ	C 02VA	20	20	10	15	-	3	3.0	0.145	
6.3	RRC 06	C 02VZ	C 02VA	20	20	15	18	-	4	4.0	0.145	
8.0	RRC 08	C 02VZ	C 02VA	20	20	15	18	-	5	5.0	0.145	
9.5	RCC 10	C 03VZ	C 03VA	28	25	15	20	-	6	6.0	0.260	
12.5	RRC 12	C 03VZ	C 03VA	28	28	15	20	-	7	8.0	0.250	
15.0	RRC 15	C 05VZ	C 05VA	38	33	20	25	-	9	10.0	0.430	
18.0	RRC 18	C 05VZ	C 05VA	38	38	20	25	-	10	12.0	0.420	

RF-profil med aluminiumkassett • Best. Nr. RF 5410 Natur, Best. Nr. RF 5410 Svart

Material: PE1000 • Längd: 6m

RF-profile with aluminium runner • Code: RF 5410 Natural, Code: RF5410 Black

Material: PE1000 • Length: 6m



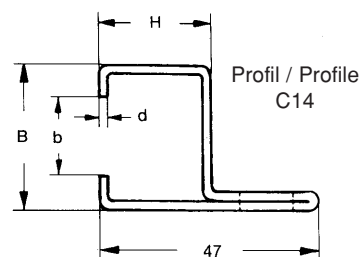
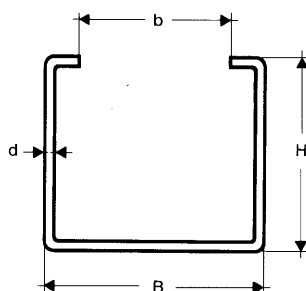
Reservation för måttförändringar / Reservation for dimensional changes

Mått i mm / Dimensions in mm

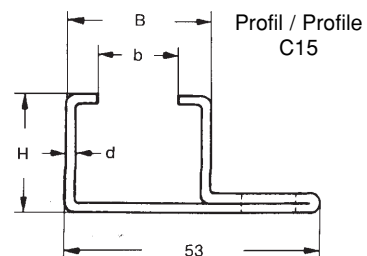
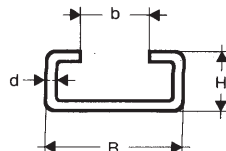
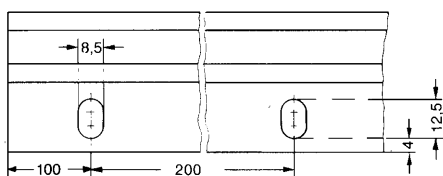
C-PROFILER

STEEL CHANNELS

C-profiler i förzinkat eller rostfritt utförande
C-channels galvanized or stainless steel



Hålbild i profil C 14 samt C 15
Perforation of flange C 14 or C 15



Best. Nr. / Code		Mått i mm. / Dimensions in mm.				Vikt Weight kg/m
Förzinkad Galvanized	Rostfritt Stainless steel material 1.4301	B	H	b	d	
C 01VZ	C 01VA	24	5.2	17.5	1.0	0.280
C 02VZ	C 02VA	20	10	10.0	1.3	0.430
C 03VZ	C 03VA	28	12	14.0	2.2	0.950
C 04VZ	C 04VA	28	16	14.0	2.3	1.150
C 05VZ	C 05VA	38	18	22.0	1.5	0.980
C 06VZ	C 06VA	30	24	20.0	1.5	0.940
C 07VZ	C 07VA	18	12	9.5	1.3	0.500
C 08VZ	C 08VA	38	18	22.0	2.5	1.430
C 09VZ	C 09VA	45	40	31.0	2.0	2.050
C 10VZ	C 10VA	60	20	36.0	2.5	2.160
C 11VZ	C 11VA	38	17	18.0	1.5	0.950
C 14VZ	C 14VA	31	25	20.0	2.0	1.200
C 14VZ OL *	C 14VA OL *	31	25	20.0	2.0	1.200
C 15VZ	C 15VA	31	25	20.0	2.0	1.200
C 15VZ OL *	C 15VA OL *	31	25	20.0	2.0	1.200
C 19VZ	C 19VA *	28	15	12.0	2.3	1.150

* Endast på förfrågan. / Only on request.

Längd ca. 6050 mm. Andra längder på förfrågan. / Length approx. 6050 mm. Sublength on request.

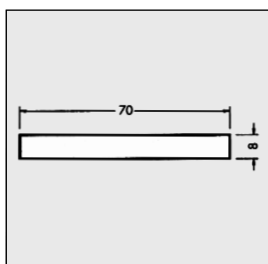
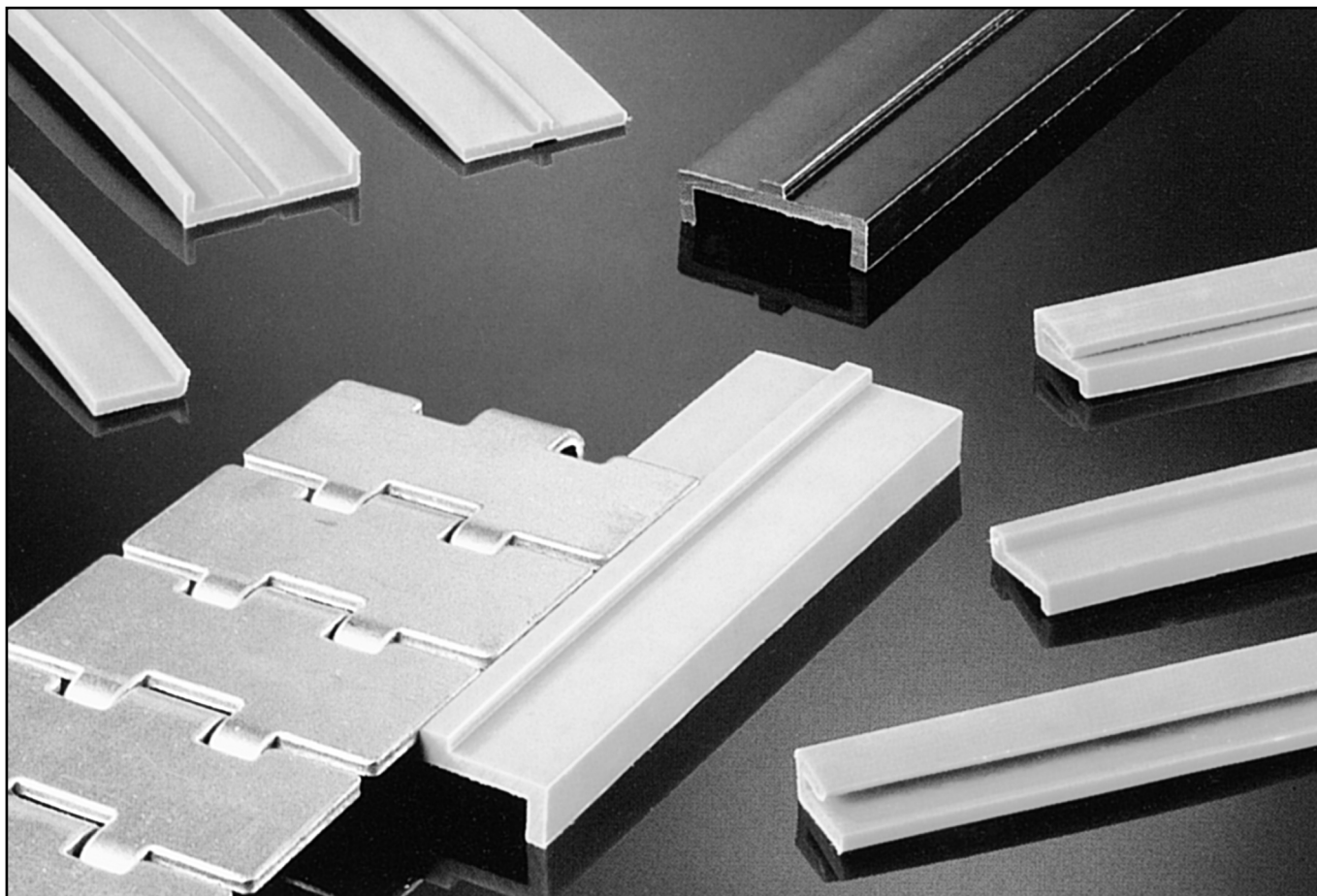
OL = utan hålbild (minsta kvantitet 100m). / Without perforation (Min. quantity 100m)

Anoljade utan ytbehandling på förfrågan. / Slightly oiled without surface treatment on request.

GLIDLISTER FÖR BANDKEDJA

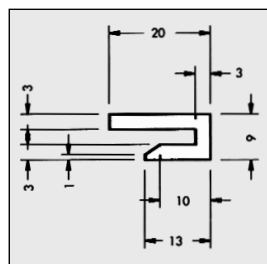
SLIDING RAILS FOR TABLE CHAINS

Material PE 1000



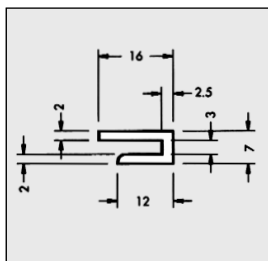
Flatprofil
Flat profile

Best. Nr. Code	Färg Colour	Längd Lenght
F 04 10	natur natural	6m
F 04 50	grön green	6m
F 04 70	svart black	6m



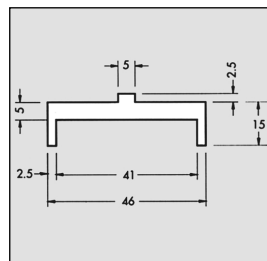
Flat klämmprofil
Clamping flat profile

Best. Nr. Code	Färg Colour	Längd Lenght
KF 86 10	natur natural	65m rulle / coil
KF 86 50	grön green	65m rulle / coil
KF 86 70	svart black	65m rulle / coil



Flat klämmprofil
Clamping flat profile

Best. Nr. Code	Färg Colour	Längd Lenght
Z 84 10	natur natural	65m rulle / coil
Z 84 50	grön green	65m rulle / coil
Z 84 70	svart black	65m rulle / coil



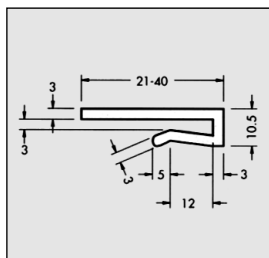
Dubbel X-profil
Centre raised profile

Best. Nr. Code	Färg Colour	Längd Lenght
DZ 77 10	natur natural	6m
DZ 77 50	grön green	6m
DZ 77 70	svart black	6m

GLIDLISTER FÖR BANDKEDJA

SLIDING RAILS FOR TABLE CHAINS

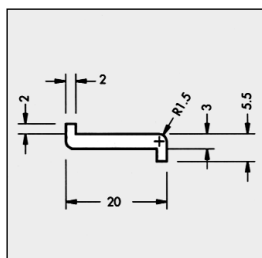
Material PE 1000



Flat klämmprofil
Clamping flat profile

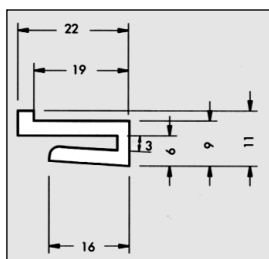
Best. Nr. Code	Färg Colour	Längd Length
KF 92 10	natur natural	50m rulle / coil
KF 92 50	grön green	50m rulle / coil
KF 92 70	svart black	50m rulle / coil

Bredder ner till 21mm på begäran
Widths down to 21mm on request.



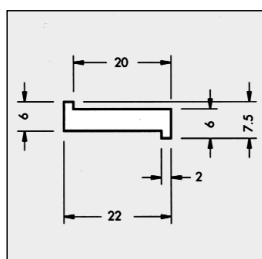
Z-profil
Z-profile

Best. Nr. Code	Färg Colour	Längd Length
Z 02 10	natur natural	50m rulle / coil
Z 02 50	grön green	50m rulle / coil
Z 02 70	svart black	50m rulle / coil



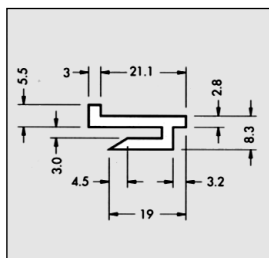
Z-klämmprofil
Clamping Z-profile

Best. Nr. Code	Färg Colour	Längd Length
Z 64 10	natur natural	65m rulle / coil
Z 64 50	grön green	65m rulle / coil
Z 64 70	svart black	65m rulle / coil



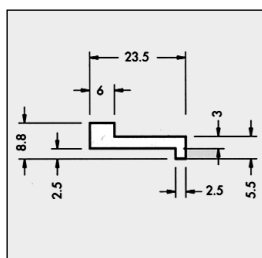
Z-profil
Z-profile

Best. Nr. Code	Färg Colour	Längd Length
Z 56 10	natur natural	50m rulle / coil
Z 56 50	grön green	50m rulle / coil
Z 56 70	svart black	50m rulle / coil



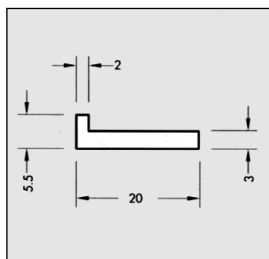
Z-klämmprofil
Clamping Z-profile

Best. Nr. Code	Färg Colour	Längd Length
GL 81 10	natur natural	65m rulle / coil
GL 81 50	grön green	65m rulle / coil
GL 81 70	svart black	65m rulle / coil



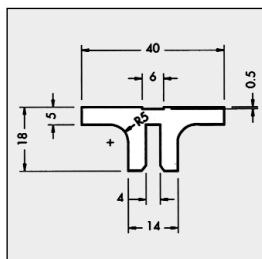
Z-profil
Z-profile

Best. Nr. Code	Färg Colour	Längd Length
Z 68 10	natur natural	40m rulle / coil
Z 68 50	grön green	40m rulle / coil
Z 68 70	svart black	40m rulle / coil



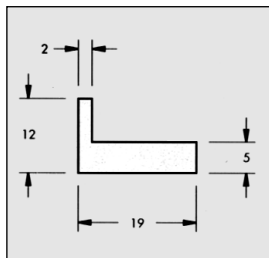
L-profil
L-profile

Best. Nr. Code	Färg Colour	Längd Length
L 35 10	natur natural	50m rulle / coil
L 35 50	grön green	50m rulle / coil
L 35 70	svart black	50m rulle / coil



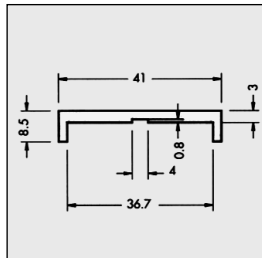
T-profil
T-profile

Best. Nr. Code	Färg Colour	Längd Length
T 83 10	natur natural	6m
T 83 50	grön green	6m
T 83 70	svart black	6m



L-profil
L-profile

Best. Nr. Code	Färg Colour	Längd Length
WS 17 10	natur natural	6m
WS 17 50	grön green	6m
WS 17 70	svart black	6m



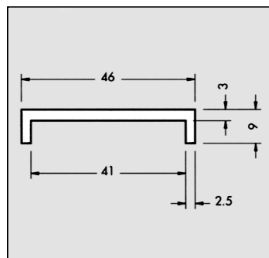
U-profil
U-profile

Best. Nr. Code	Färg Colour	Längd Length
GL 82 10	natur natural	50m rulle / coil
GL 82 50	grön green	50m rulle / coil
GL 82 70	svart black	50m rulle / coil

GLIDLISTER FÖR BANDKEDJA

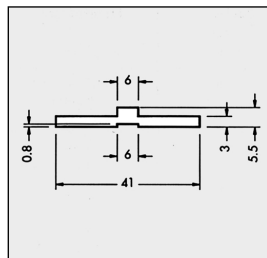
SLIDING RAILS FOR TABLETOP CHAINS

Material PE 1000



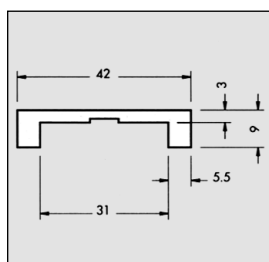
U-profil
U-profile

Best. Nr. Code	Färg Colour	Längd Length
U 87 10	natur natural	45m rulle / coil
U 87 50	grön green	45m rulle / coil
U 87 70	svart black	45m rulle / coil



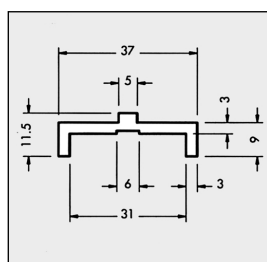
Wulst-profil
Centre raised profile

Best. Nr. Code	Färg Colour	Längd Length
W 34 106	natur natural	100m rulle / coil
W 34 506	grön green	100m rulle / coil
W 34 706	svart black	100m rulle / coil



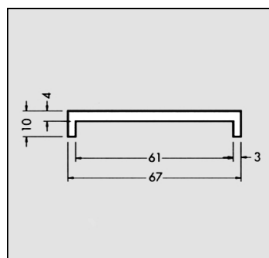
U-profil
U-profile

Best. Nr. Code	Färg Colour	Längd Length
U 93 10	natur natural	6m
U 93 50	grön green	6m
U 93 70	svart black	6m



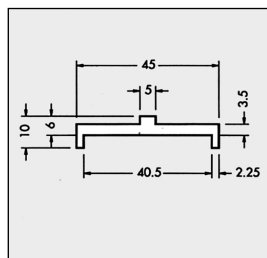
Z-profil
Centre raised profile

Best. Nr. Code	Färg Colour	Längd Length
Z 46 10	natur natural	65m rulle / coil
Z 46 50	grön green	65m rulle / coil
Z 46 70	svart black	65m rulle / coil



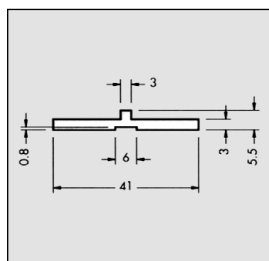
U-profil
U-profile

Best. Nr. Code	Färg Colour	Längd Length
U 9510	natur natural	6m
U 95 50	grön green	6m
U 95 70	svart black	6m



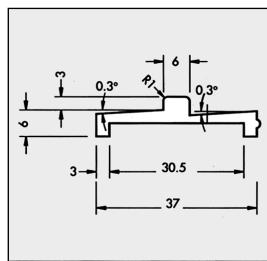
Dubbel Z-profil
Centre raised profile

Best. Nr. Code	Färg Colour	Längd Length
DZ 57 10	natur natural	6m
DZ 57 50	grön green	6m
DZ 57 70	svart black	6m



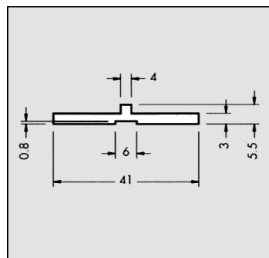
Wulst-profil
Centre raised profile

Best. Nr. Code	Färg Colour	Längd Length
W 34 103	natur natural	100m rulle / coil
W 34 503	grön green	100m rulle / coil
W 34 703	svart black	100m rulle / coil



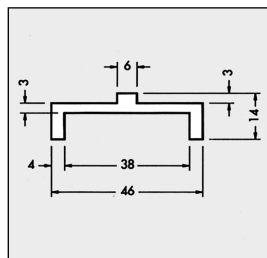
Dubbel Z-profil / vinklad
Centre raised profile tilted

Best. Nr. Code	Färg Colour	Längd Length
DZ 67 10	natur natural	6m
DZ 67 50	grön green	6m
DZ 67 70	svart black	6m



Wulst-profil
Centre raised profile

Best. Nr. Code	Färg Colour	Längd Length
W 34 104	natur natural	100m rulle / coil
W 34 504	grön green	100m rulle / coil
W 34 704	svart black	100m rulle / coil



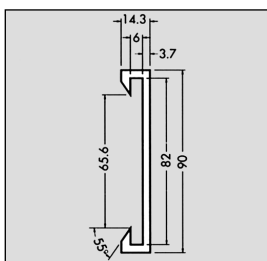
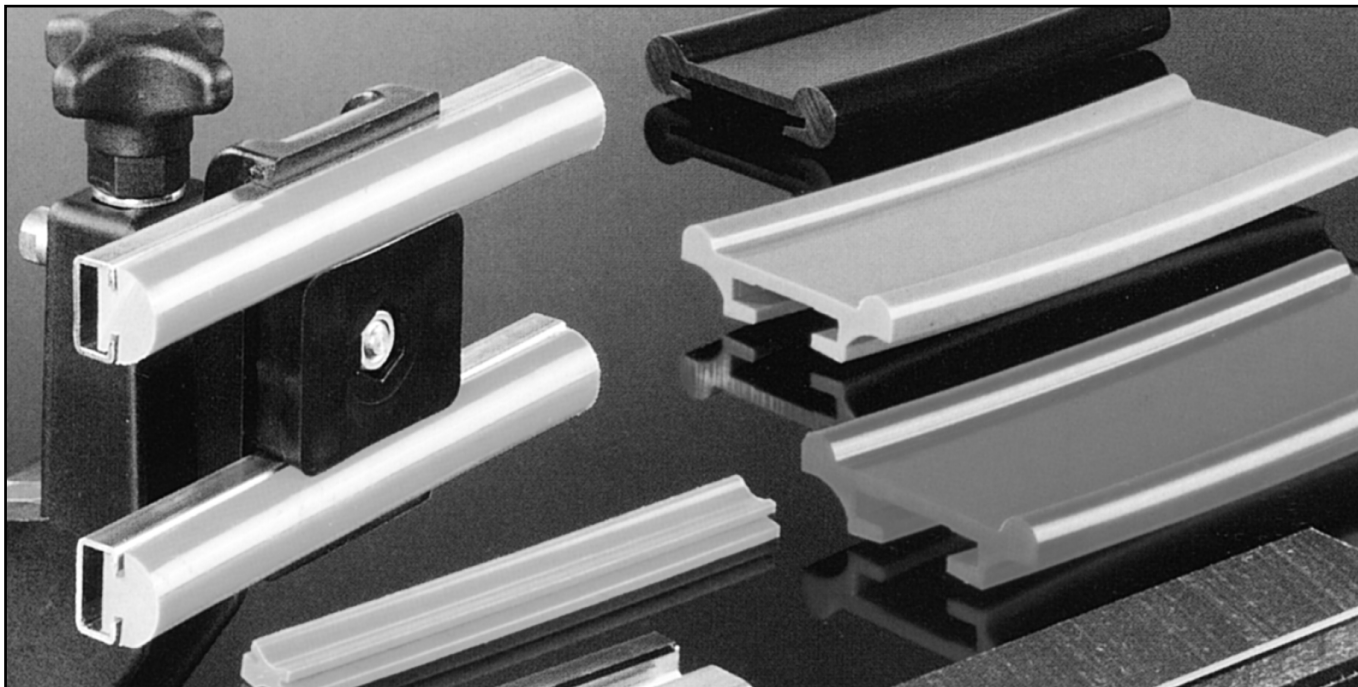
Dubbel Z-profil
Centre raised profile

Best. Nr. Code	Färg Colour	Längd Length
DZ 70 10	natur natural	6m
DZ 70 50	grön green	6m
DZ 70 70	svart black	6m

STYRLISTER

GUIDE RAILS

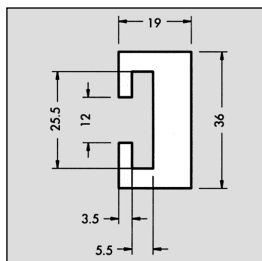
Material PE 1000



C-profil / C-profile

Best. Nr. Code	Färg Colour	Längd Lenght
C 10 10	natur natural	6m
C 10 50	grön green	6m
C 10 70	svart black	6m

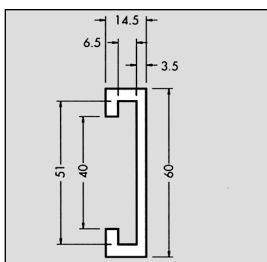
För plattstål 80x6mm
For flatsteel 80x6mm



C-profil / C-profile

Best. Nr. Code	Färg Colour	Längd Lenght
C 60 10	natur natural	6m
C 60 50	grön green	6m
C 60 70	svart black	6m

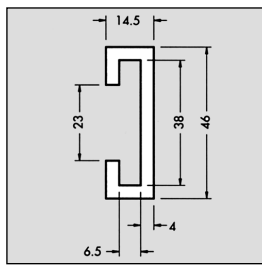
För plattstål 25x5mm
For flatsteel 25x5mm



C-profil / C-profile

Best. Nr. Code	Färg Colour	Längd Lenght
C 30 10	natur natural	6m
C 30 50	grön green	6m
C 30 70	svart black	6m

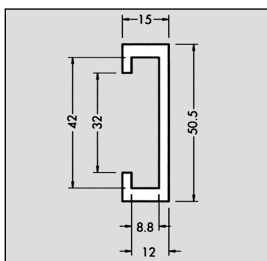
För plattstål 50x6mm
For flatsteel 50x6mm



C-profil / C-profile

Best. Nr. Code	Färg Colour	Längd Lenght
C 66 10	natur natural	6m
C 66 50	grön green	6m
C 66 70	svart black	6m

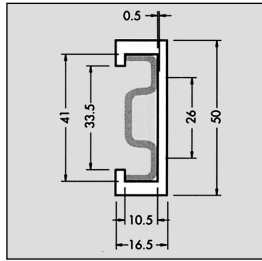
För plattstål 35x6mm
For flatsteel 35x6mm



C-profil / C-profile

Best. Nr. Code	Färg Colour	Längd Lenght
C 31 10	natur natural	6m
C 31 50	grön green	6m
C 31 70	svart black	6m

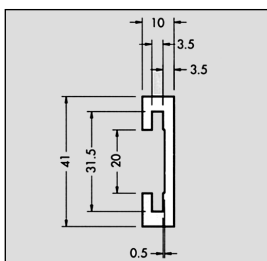
För plattstål 40x8mm
For flatsteel 40x8mm



C-profil / C-profile

Best. Nr. Code	Färg Colour	Längd Lenght
C 75 10	natur natural	6m
C 75 50	grön green	6m
C 75 70	svart black	6m

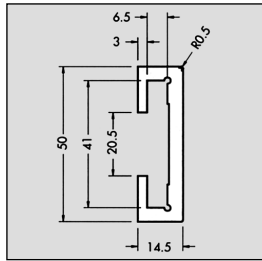
För stål profil 44M1Z
For steel profile 44M1Z



C-profil / C-profile

Best. Nr. Code	Färg Colour	Längd Lenght
C 32 10	natur natural	6m
C 32 50	grön green	6m
C 32 70	svart black	6m

För plattstål 30x3mm
For flatsteel 30x3mm

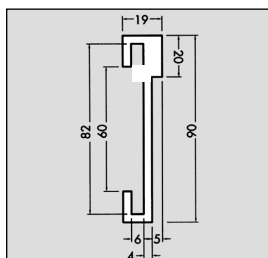


C-profil / C-profile

Best. Nr. Code	Färg Colour	Längd Lenght
C 76 10	natur natural	6m
C 76 50	grön green	6m
C 76 70	svart black	6m

För plattstål 40x6mm
For flatsteel 40x6mm

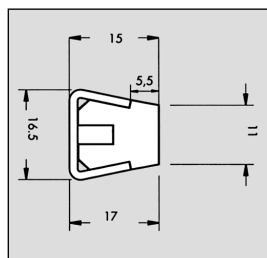
Material PE 1000



C-profil / C-profile

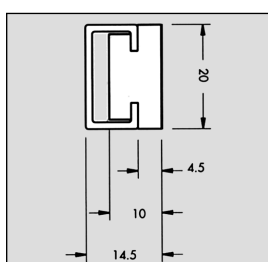
Best. Nr. Code	Färg Colour	Längd Lenght
C 91 10	natur natural	6m
C 91 50	grön green	6m
C 91 70	svart black	6m

För plattstål 80 x 6mm
For flat steel profile 80 x 6mm



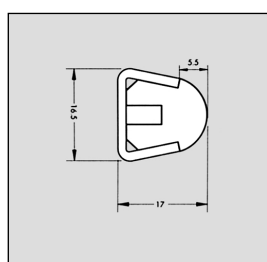
Styrlist med profil U 01
Guide rail with profile U 01

Best. Nr. Code	Färg Colour	Längd Lenght
FC 72 10	natur natural	3m
FC 72 50	grön green	3m
FC 72 70	svart black	3m



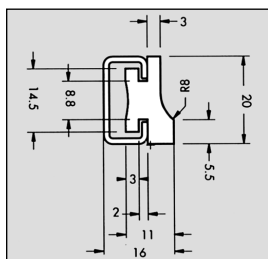
Styrlist för C-stål C 02
Guide rail for C-steel C 02

Best. Nr. Code	Färg Colour	Längd Lenght
GF 55 10	natur natural	6m
GF 55 50	grön green	6m
GF 55 70	svart black	6m



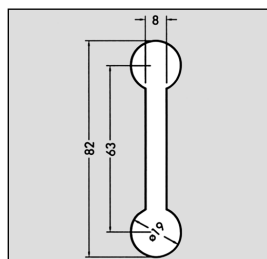
Styrlist med profil U 01
Guide rail with profile U 01

Best. Nr. Code	Färg Colour	Längd Lenght
RC 71 10	natur natural	3m
RC 71 50	grön green	3m
RC 71 70	svart black	3m



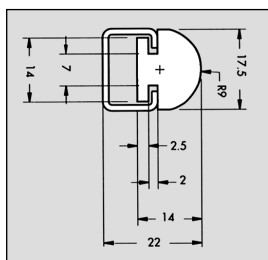
Styrlist för C-stål C 02
Guide rail for C-steel C 02

Best. Nr. Code	Färg Colour	Längd Lenght
PN 49 10	natur natural	6m
PN 49 50	grön green	6m
PN 49 70	svart black	6m



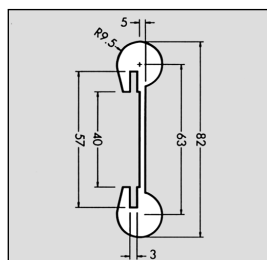
Styrlist
Guide rail

Best. Nr. Code	Färg Colour	Längd Lenght
DB 01 10	natur natural	6m
DB 01 50	grön green	6m
DB 01 70	svart black	6m



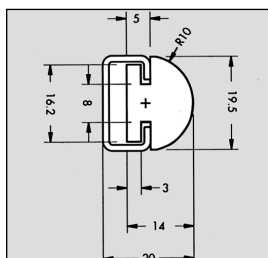
Styrlist för C-stål C 07
Guide rail for C-steel C 07

Best. Nr. Code	Färg Colour	Längd Lenght
PP 20 10	natur natural	6m
PP 20 50	grön green	6m
PP 20 70	svart black	6m



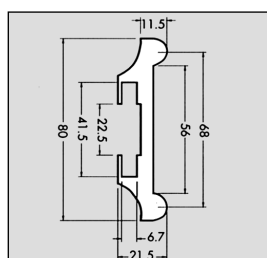
Styrlist
Guide rail

Best. Nr. Code	Färg Colour	Längd Lenght
FG 65 10	natur natural	6m
FG 65 50	grön green	6m
FG 65 70	svart black	6m



Styrlist för C-stål C 02
Guide rail for C-steel C 02

Best. Nr. Code	Färg Colour	Längd Lenght
PP 61 10	natur natural	6m
PP 61 50	grön green	6m
PP 61 70	svart black	6m



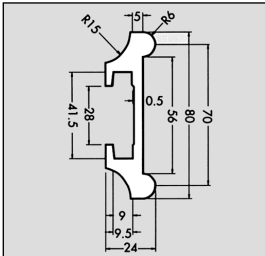
Styrlist
Guide rail

Best. Nr. Code	Färg Colour	Längd Lenght
MBG 50 10	natur natural	6m
MBG 50 50	grön green	6m
MBG 50 70	svart black	6m

STYRLISTER

GUIDE RAILS

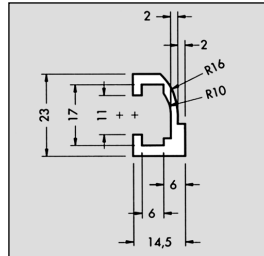
Material PE 1000



Styrlist / Guide rail

Best. Nr. Code	Färg Colour	Längd Length
MBG 88 10	natur natural	6m
MBG 88 50	grön green	6m
MBG 88 70	svart black	6m

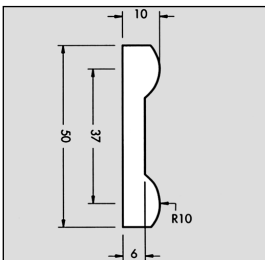
För plattstål 40 x 8mm
For flat steel profile 40 x 8mm



Styrlist / Guide rail

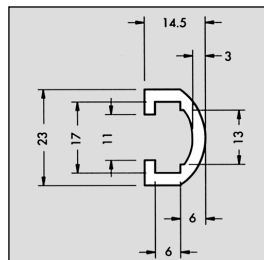
Best. Nr. Code	Färg Colour	Längd Length
SS 52 10	natur natural	6m
SS 52 50	grön green	6m
SS 52 70	svart black	6m

För plattstål 17 x 5,5mm
For flat steel profile 17 x 5,5mm



Styrlist / Guide rail

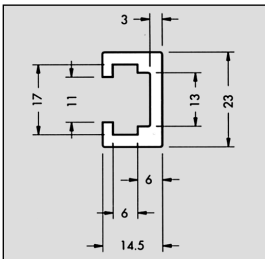
Best. Nr. Code	Färg Colour	Längd Length
TB 15 10	natur natural	6m
TB 15 50	grön green	6m
TB 15 70	svart black	6m



Styrlist / Guide rail

Best. Nr. Code	Färg Colour	Längd Length
SS 53 10	natur natural	6m
SS 53 50	grön green	6m
SS 53 70	svart black	6m

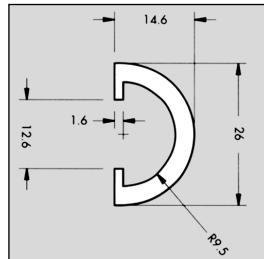
För plattstål 17 x 5,5mm
For flat steel profile 17 x 5,5mm



Styrlist / Guide rail

Best. Nr. Code	Färg Colour	Längd Length
SS 51 10	natur natural	6m
SS 51 50	grön green	6m
SS 51 70	svart black	6m

För plattstål 17 x 5,5mm
For flat steel profile 17 x 5,5mm



Styrlist / Guide rail

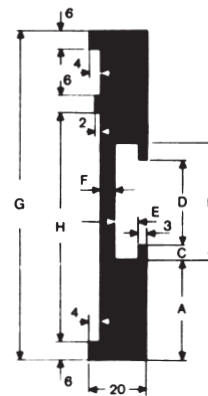
Best. Nr. Code	Färg Colour	Längd Length
SO 13 10	natur natural	6m
SO 13 50	grön green	6m
SO 13 70	svart black	6m

Styrskena

Material: PE55 • Färg: svart • Längd: 2m

Multiple guide rail

Material: PE55 • Couler: svart • Längd: 2m



Best. Nr. Code	Mått i mm. / Dimensions in mm.							
	A	B	C	D	E	F	G	H
51-MFG 1	30	51	8.0	35	6.5	6.5	115	80
51-MFG 2	35	41	5.5	30	8.3	4.7	115	80
51-MFG 3	35	41	5.5	30	8.3	4.7	105	68
51-MFG 4	35	41	5.5	30	8.3	4.7	117	75
51-MFG 5	35	41	5.5	30	8.3	4.7	110	73
51-MFG 6	39	41	5.5	30	8.3	4.7	165	118

KURVOR FÖR BANDKEDJA MED TILLBEHÖR

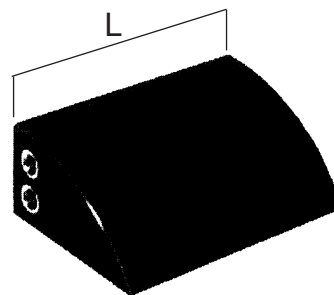
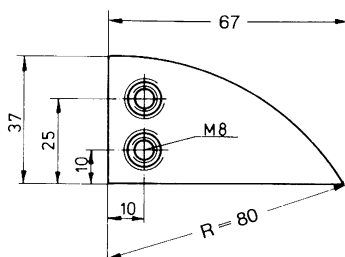
COMPACT CURVES FOR TABLETOP CHAINS WITH ACCESSORIES

Påmatningskloss

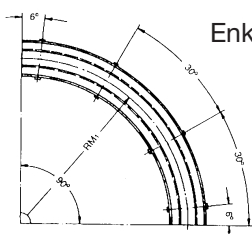
Material: PE-1000 • Färg: svart
 Best. Nr. EG-100 • L=100mm
 Best. Nr. EG-2000 • L=2000mm
 utan M8 gänga
 Andra utförande på förfrågan

Feedingslidor

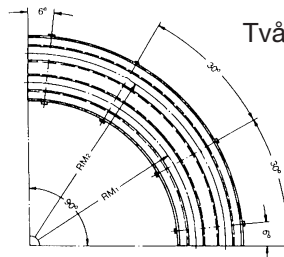
Material: PE-1000 • Coluer: svart
 Code. No. EG-100 • L=100mm
 Code. No. EG-2000 • L=2000mm
 without M8 insert
 Other types on request



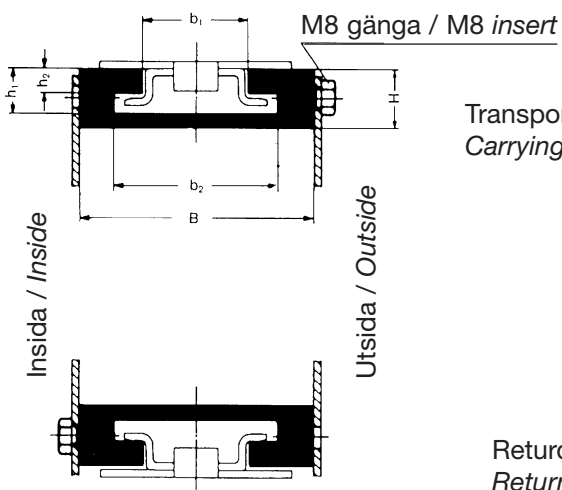
Måttskiss för kurvor i utförande KT/TAB - För måttuppgifter se nästa sida.
 Drawings for curves KT / TAB - For measures see next page



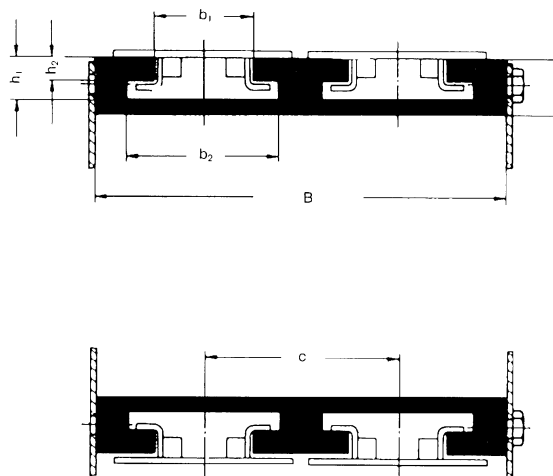
Enkelradig / Single - Lane



Tvåradig / Two - Lane

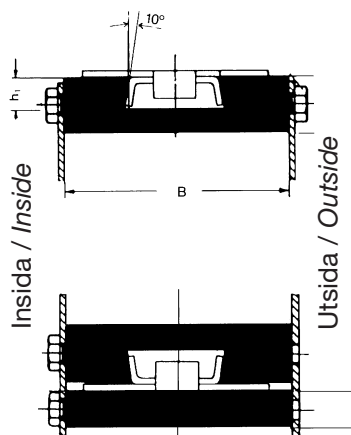


Transportdel
Carrying run

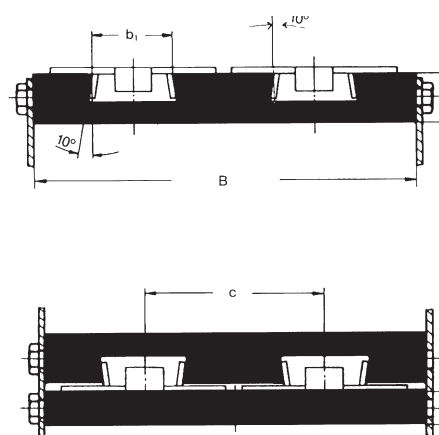


Returdel
Return way

Måttskiss för kurvor i utförande KS / Drawings for curves KS



Transportdel
Carrying run



Returdel
Return way

KURVOR FÖR BANDKEDJA

COMPACT CURVES FOR TABLETOP CHAINS

Material PE 1000

Färg: svart • Kurvor: Maskinbearbetade
 Komplet med M8 gängsats, för dess placering se måttbild.
 Kurvor enligt ritning på förfrågan, även raka banor.

Couler: Black • Curves: Machined
Complete with M8 insert, see drawing on former page.
Curves acc.to drawing on request, also straight guides.

Best. Nr. Code	Mått i mm. / Dimensions in mm.									Antal banor No. of curve way	För kedja For chain types	
	B	b 1	b 2	H	h 1	h 2	h 3	RM 1	C			
1121 S013 050 1 90	100										1	D 880-K325
1121 S013 050 2 90	190	41.4	-	25	18	-	16	500	90		2	LF 880-K325
1121 S013 050 3 90	280										3	SS 881-K325
												SSC 881-K325
1121 S018 061 1 90	125	41.4	-	25	18	-	16	610	120		1	D 880-K450
												LF 880-K450
												SS 881-K450
												SSC 881-K450
1121 S013 086 1 90	100							860	90		1	D 880-K325
1121 S013 122 1 90	100	41.4	-	25	18	-	16	1220			1	LF 880-K325
1121 S013 131 1 90	100							1310			1	SS 881-K325
												SSC 881-K325
1121 S030 061 1 90	200	41.4	-	25	18	-	16	610	195		1	SS 881-K750
												SSC 881-K750
1121 T013 050 1 90	100	44.5	70	25	19	10	-	500	90		1	LF 880TAB-K325
1121 T013 050 2 90	190										2	SS 881TAB-K325
1121 T013 050 3 90	280										3	SSC 881TAB-K325
1121 T013 050 4 90	370										4	
1121 T013 050 5 90	460										5	
1121 T013 050 6 90	550										6	
1121 T018 061 1 90	125	44.5	70	25	19	10	-	610	120		1	LF 880TAB-K450
												SS 881TAB-K450
												SSC 881TAB-K450
1121 T218 061 1 90	125	58	90	32	26	16	-	610	120		1	LF 882TAB-K450
												LBP 883TAB-K450
1121 T030 061 1 90	200	44.5	70	25	19	10	-	610	195		1	SS 881TAB-K750
												SSC 881TAB-K750
1121 T230 061 1 90	200	58	90	32	26	16	-	610	195		1	LF 882TAB-K750
												LBP 88TAB-K750
1121 T013 086 1 90	100	44.5	70	25	19	10	-	860	90		1	LF 880TAB-K325
1121 T013 122 1 90								1220			1	SS 881TAB-K325
1121 T013 131 1 90								1310			1	SSC 881TAB-K325

RUNDSTÄNGER • GLIDBAND

BARS • TAPES

Material PE 1000

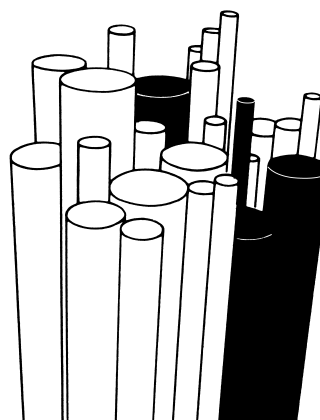
Färdig diameter <i>Nominal dia</i>	Rå-diameter <i>Real dia</i>	Vikt i kg / <i>Weight in kg</i>		
		1000 mm	2000 mm	3000 mm
20	21.0	0.33	0.66	0.99
25	26.5	0.55	1.10	1.65
30	31.8	0.75	1.50	2.25
35	36.2	1.00	2.00	3.00
40	41.5	1.28	2.56	3.84
45	46.0	1.60	3.20	4.80
50	52.0	2.20	4.40	6.60
55	56.5	2.37	4.74	-
60	62.5	2.92	5.84	-
70	71.0	3.80	7.60	-
80	81.0	5.10	10.20	-
90	91.0	6.40	12.80	-
100	101.0	8.00	16.00	-
110	110 - 112	9.30	18.60	-
125	126 - 129	12.20	24.40	-
130	131 - 134	13.40	26.80	-
140	142 - 144	15.50	31.00	-
160	160 - 161	20.50	41.00	-
180	183 - 185	27.00	54.00	-
200	208 - 210	33.20	-	-

Rundstänger

Färg: Grön, svart och natur
Lagerförd: Grön

Bars

Colour: Green, black and natural
From stock: Green



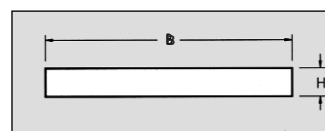
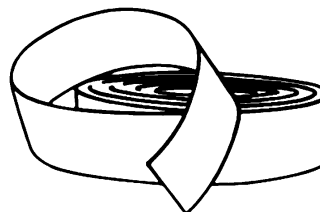
Bredd B <i>Width B</i>	Tjocklek H / <i>Thickness H</i>				
	2mm	3mm	4mm	5mm	6mm
20	79m	82m	39m	48m	26m
25	79m	82m	39m	48m	26m
30	117m	82m	56m	48m	37m
35	117m	82m	56m	48m	37m
40	117m	82m	56m	48m	37m
45	117m	82m	56m	48m	37m
50	117m	82m	56m	48m	37m
55	117m	82m	56m	48m	-
60	117m	82m	56m	48m	-
65	117m	82m	56m	48m	-
70	117m	82m	56m	48m	-
75	117m	82m	56m	48m	-
80	117m	82m	56m	48m	-
85	117m	82m	-	-	-
90	117m	82m	-	-	-
95	117m	82m	-	-	-
100	117m	82m	-	-	-

Glidband

Färg: Grön
Angivna längder i meter är
längder per hel rulle.
Minsta leveranslängd är 1 meter.

Tapes

Colour: Green
The length are total m/coil.
Min. delivery length is one meter.



PLATTOR

PRESSED SHEETS

Material PE 1000

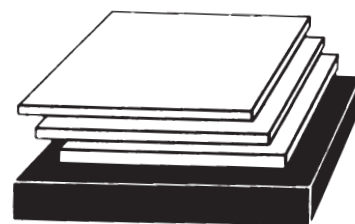
Dimension mm. <i>Dimensions mm.</i>	Tjocklek i mm <i>Thickness in mm.</i>	Skalade plattor toleransvidd <i>Peeled sheets Tolerance</i>	Hyvlade plattor toleransvidd <i>Planed sheets Tolerance</i>
* 2000 x 1000	10 - 250	1 - 9 mm = ± 0.6	10 - 30 mm = ± 0.2 35 - 100 mm = ± 0.3 110 - 180 mm = ± 0.5
* 1920 x 940	1 - 9		
3000 x 1000	30 - 150		
5000 x 1000	10 - 100		
10000 x 1000	10 - 100		
2000 x 1250	20 - 80		
2700 x 1350	20 - 60		
3000 x 2000	30 - 150		
5000 x 2000	20 - 80		
3000 x 1250	10 - 100		

* Lagerförda storlekar upp till 50mm tjocklek. / * On stock up to 50mm thickness.

Lagerförda färger: Grön. / *Coulers on stock: Green.*

Från lager fabrik: Svart, Natur. / *From factory stock: Black, Natural.*

Andra färger på förfrågan. / *Other colours on request.*



D

Material PE 1000 Regenerat

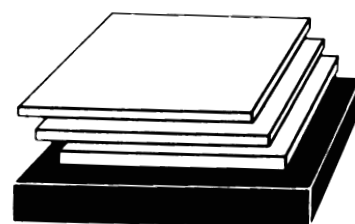
PE 46 Storlek Dimensions mm	PE-55 Storlek Dimensions mm	Tjocklek i mm <i>Thickness in mm</i> mm	Hyvlade plattor toleransvidd <i>Planed sheets Tolerance</i>
* 2000 x 1000	2000 x 1000	10 - 200	10 - 30 mm = ± 0.2 35 - 100 mm = ± 0.3 110 - 180 mm = ± 0.5
3000 x 1000	3000 x 1000	30 - 150	
5000 x 1000	5000 x 1000	10 - 100	
10000 x 1000	10000 x 1000	10 - 100	
2000 x 1250	2000 x 1250	20 - 80	
2700 x 1350	2700 x 1350	10 - 50	
2700 x 1800	2700 x 1800	15 - 50	
3000 x 2000	3000 x 2000	30 - 150	
5000 x 2000	5000 x 2000	10 - 80	
3000 x 1250	3000 x 1250	-	

* Lagerförda storlekar upp till 50mm tjocklek. / * On stock up to 50mm thickness.

Lagerförda färger: Svart, Multifärgad. / *Coulers on stock: Black, Multicoloured*

Från lager fabrik: Grön, Multifärgad. / *From factory stock: Green, Multicoloured*

Andra färger på förfrågan. / *Other colours on request.*



Materialbeskrivning:

PE 1000: Sinterpressat UHMV polyeten

PE 55: Som ovan men med 50% regenerat.

PE 46: Som ovan men med 60% regenerat.

Materialdescription:

PE 1000: *Sintered UHMV polyethylene*

PE 55: *The same as UHMV but with 50% regenerat.*

PE 46: *The same as UHMV but with 60% regenerat.*

Sågade lister samt plattor:

Sågat utförande levereras efter era ritningar eller annan specifikation.

Cutted guide or sheets

Cuttings according to your instructions or drawings